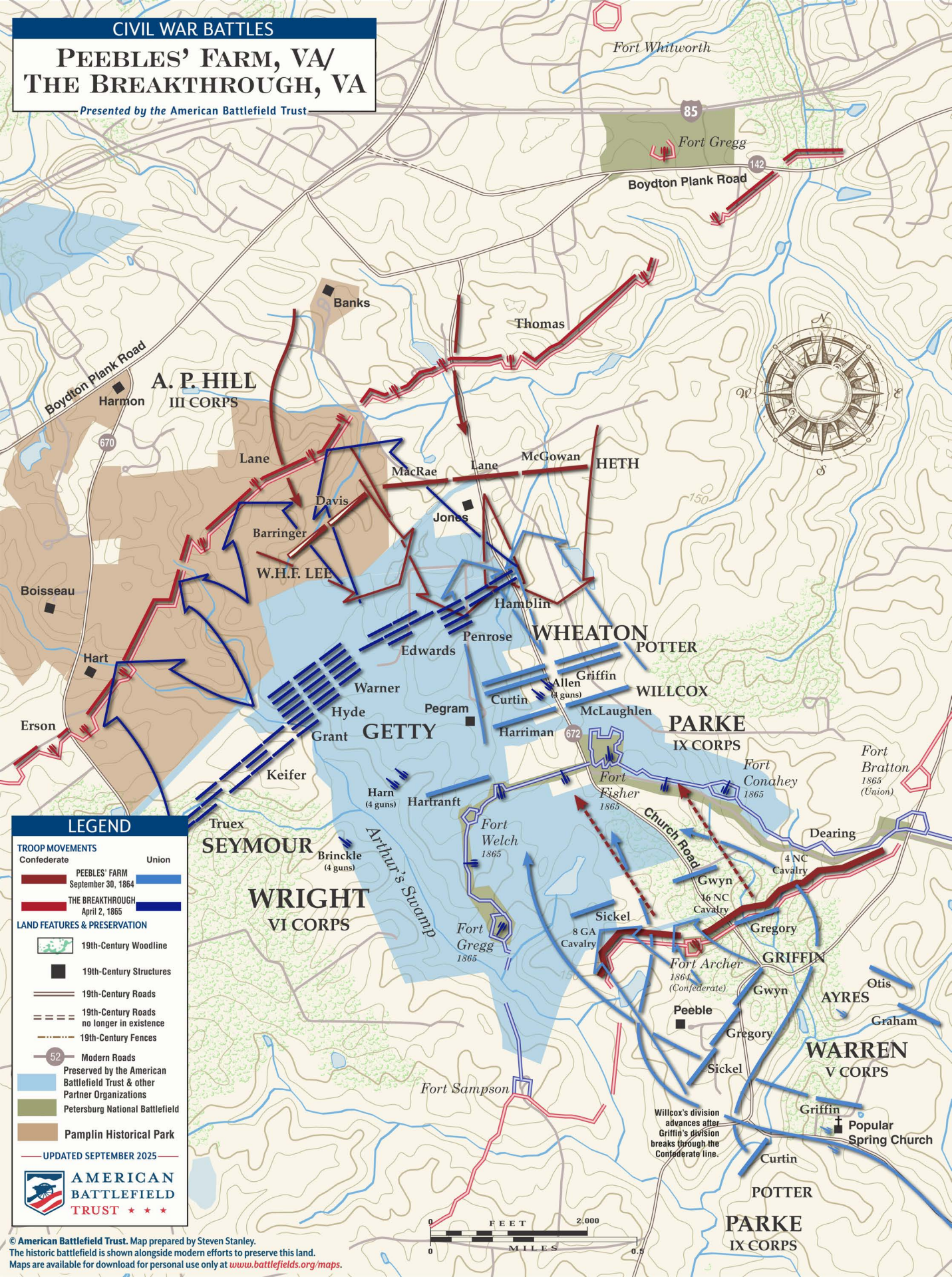


CIVIL WAR BATTLES

PEEBLES' FARM, VA/ THE BREAKTHROUGH, VA

Presented by the American Battlefield Trust



LEGEND

TROOP MOVEMENTS

Confederate	Union
PEEBLES' FARM September 30, 1864	
THE BREAKTHROUGH April 2, 1865	

LAND FEATURES & PRESERVATION

	19th-Century Woodline
	19th-Century Structures
	19th-Century Roads
	19th-Century Roads no longer in existence
	19th-Century Fences
	Modern Roads
	Preserved by the American Battlefield Trust & other Partner Organizations
	Petersburg National Battlefield
	Pamplin Historical Park

UPDATED SEPTEMBER 2025



AMERICAN
BATTLEFIELD
TRUST