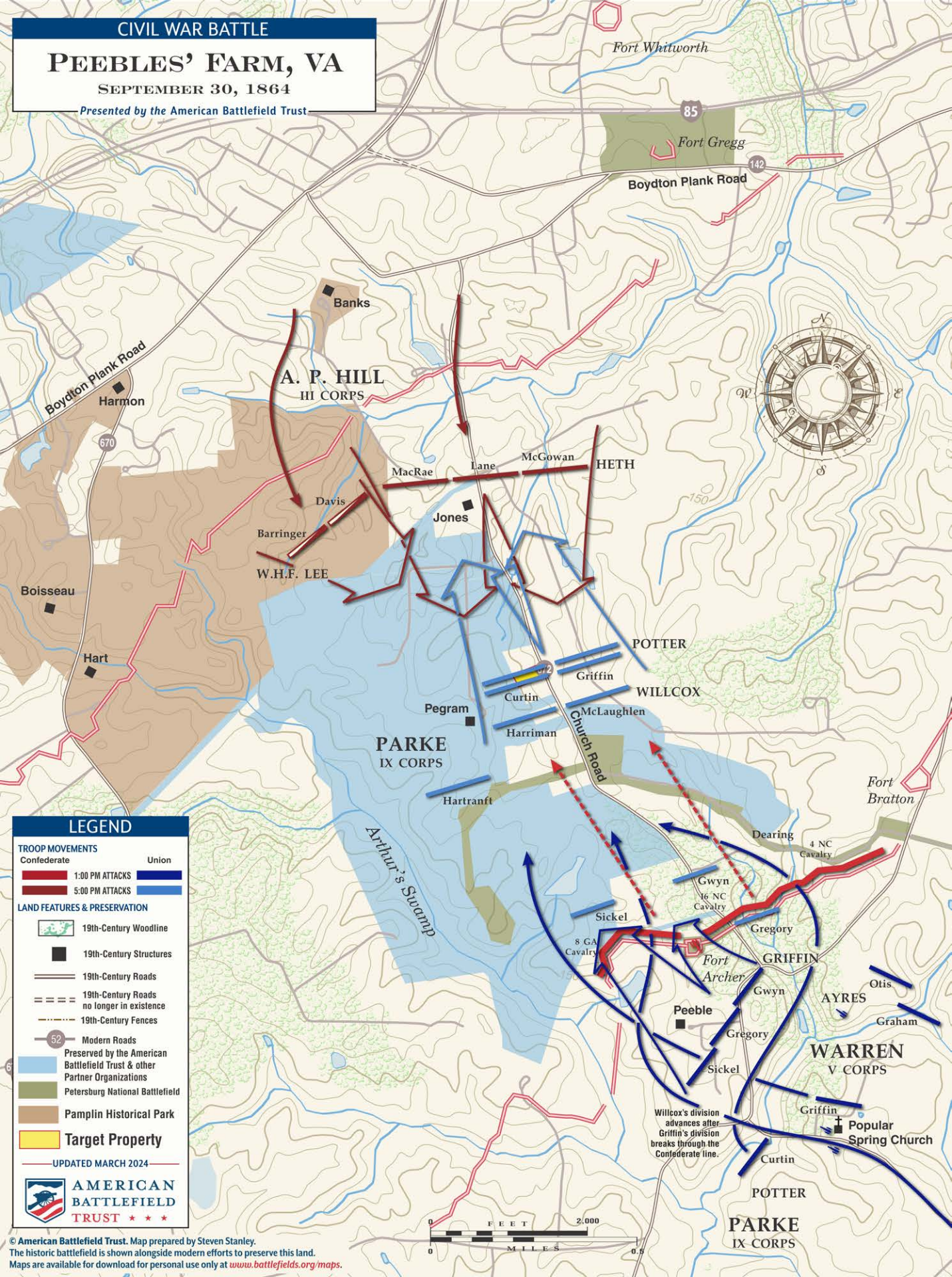


CIVIL WAR BATTLE

# PEEBLES' FARM, VA

SEPTEMBER 30, 1864

Presented by the American Battlefield Trust



**LEGEND**

**TROOP MOVEMENTS**

Confederate	Union

**LAND FEATURES & PRESERVATION**

- 19th-Century Woodline
- 19th-Century Structures
- 19th-Century Roads
- 19th-Century Roads no longer in existence
- 19th-Century Fences
- Modern Roads
- Preserved by the American Battlefield Trust & other Partner Organizations
- Petersburg National Battlefield
- Pamplin Historical Park
- Target Property

UPDATED MARCH 2024

**AMERICAN BATTLEFIELD TRUST**

© American Battlefield Trust. Map prepared by Steven Stanley. The historic battlefield is shown alongside modern efforts to preserve this land. Maps are available for download for personal use only at [www.battlefields.org/maps](http://www.battlefields.org/maps).