

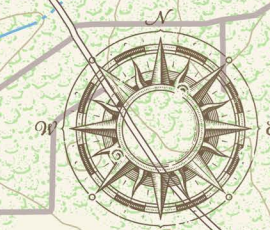
CIVIL WAR BATTLE

MANSFIELD, LA

APRIL 8, 1864

FIRST AND SECOND PHASE

Presented by the American Battlefield Trust



LEGEND

TROOP MOVEMENTS

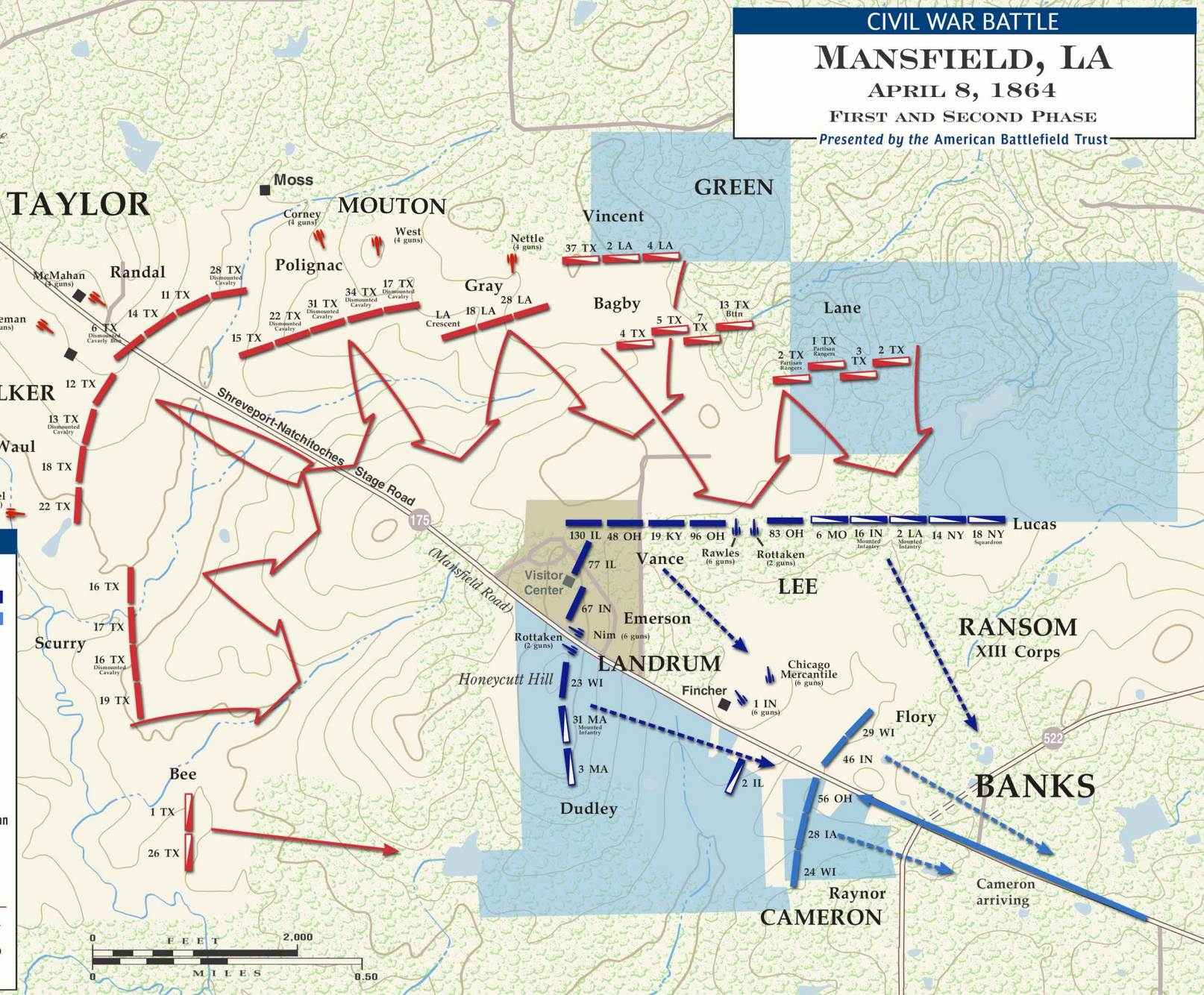
	Confederate		Union
	FIRST PHASE		
	SECOND PHASE		

LAND FEATURES & PRESERVATION

- 19th-Century Woodline
- 19th-Century Structures
- 19th-Century Roads
- 19th-Century Roads no longer in existence
- 19th-Century Fences
- Modern Roads
- Preserved by the American Battlefield Trust & other Partner Organizations
- Preserved by the State of Louisiana

UPDATED OCTOBER 2022

AMERICAN BATTLEFIELD TRUST



© American Battlefield Trust. Map prepared by Steven Stanley. The historic battlefield is shown alongside modern efforts to preserve this land. Maps are available for download for personal use only at www.battlefields.org/maps.