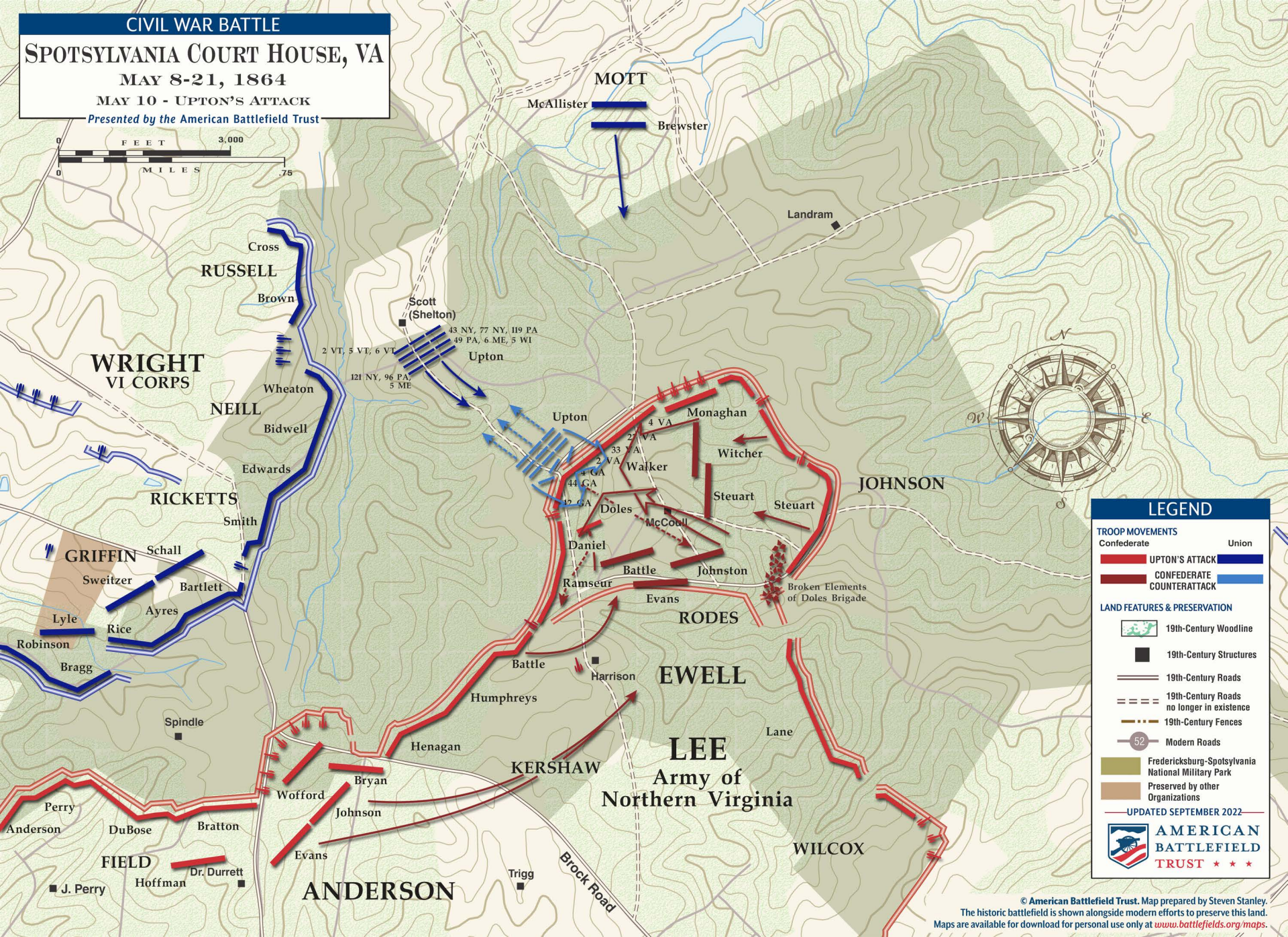


CIVIL WAR BATTLE
SPOTSYLVANIA COURT HOUSE, VA
MAY 8-21, 1864
MAY 10 - UPTON'S ATTACK
Presented by the American Battlefield Trust



LEGEND

TROOP MOVEMENTS	
Confederate	Union
UPTON'S ATTACK	CONFEDERATE COUNTERATTACK

LAND FEATURES & PRESERVATION

- 19th-Century Woodline
- 19th-Century Structures
- 19th-Century Roads
- 19th-Century Roads no longer in existence
- 19th-Century Fences
- Modern Roads
- Fredericksburg-Spotsylvania National Military Park
- Preserved by other Organizations

UPDATED SEPTEMBER 2022

AMERICAN BATTLEFIELD TRUST

© American Battlefield Trust. Map prepared by Steven Stanley. The historic battlefield is shown alongside modern efforts to preserve this land. Maps are available for download for personal use only at www.battlefields.org/maps.